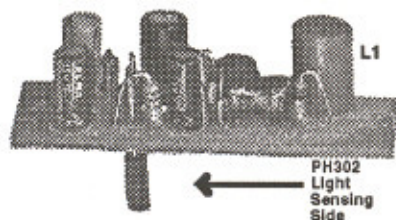
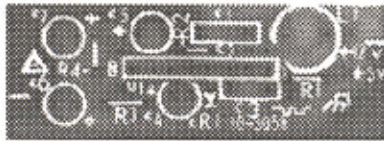


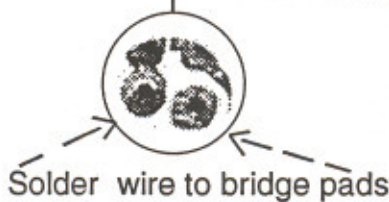
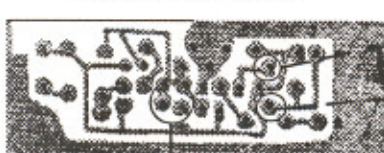
INFRARED RECEIVER BOARD



PC Board Top

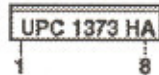


PC Board Bottom



PH302

IR Receiver IC



ASSEMBLY INSTRUCTIONS:

ALL ELECTROLYTICS: Observe polarity and match capacitor to polarity on board.

DIODES: Match banded end to point of arrow on diode symbol.

PHOTODIODE PH302: Mounts on *foil side* of board (see diagrams).

INFRARED RECEIVER IC UPC1373HA:

Observe proper orientation.

When a button on the remote is pressed a series of negative pulses will appear at the output of the receiver board. The "clock pulse" will continue as long as a button is held down.

IR RECEIVER BOARD PARTS LIST

- C1 0.033 μ F disk ceramic
- C2 1200pF mono ceramic
- C3 150pF silver mica
- C4,6,7 10 μ F radial electrolytic
- C5 100 μ F radial electrolytic
- R1 100K ohms $\frac{1}{4}$ W (brown,black,yel.,gold)
- R2 220K ohms $\frac{1}{4}$ W (red, red, yellow, gold)
- R3 100 ohms $\frac{1}{4}$ W (brown,black,brown,gold)
- R4 1K ohms $\frac{1}{4}$ W (brown, black, red, gold)
- L1 2200 μ H molded choke
- CR1 1N914 Diode
- CR2 NEC #PH302 IR detector*
- U1 IR receiver IC NEC #UPC1373HA

* Note this component mounts on foil side.

