

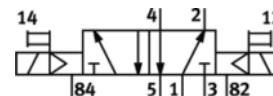
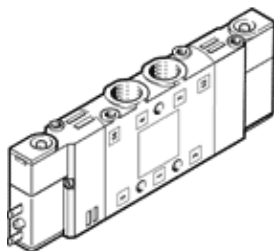
# Solenoid valve

## CPE14-M1BH-5J-1/8

Part number: 196939

FESTO

High component density



## Data sheet

Feature	values
Valve function	5/2 bistable
Type of actuation	electrical
Width	14 mm
Standard nominal flow rate	800 l/min
Operating pressure	2 ... 8 bar
Design structure	Piston slide
Protection class	IP65 with plug socket to IEC 60529
Authorisation	Germanischer Lloyd c UL us - Recognized (OL)
Nominal size	6 mm
Vibration resistance	Transport application test at severity level 2 in accordance with FN 942017-4 and EN 60068-2-6
Shock resistance	Shock test SG2 to FN/EN
Exhaust-air function	throttleable
Sealing principle	soft
Assembly position	Any
Manual override	with accessories, detenting Pushing
Type of piloting	Piloted
Pilot air supply	Internal
Flow direction	non reversible
Valve position identification	Inscription label holder
Freedom from overlap	Yes
Note on forced dynamisation	Switching frequency at least once a week
Switching time reversal	13 ms
Duty cycle	100% with holding current reduction
Max. positive test pulse with logic 0	1.200 µs
Max. negative test pulse with logic 1	900 µs
Characteristic coil data	24V DC: 1,28W
Permissible voltage fluctuation	-15 % / +10 %
Operating medium	Compressed air in accordance with ISO8573-1:2010 [7:4:4]
Note on operating and pilot medium	Lubricated operation possible (subsequently required for further operation)
Corrosion resistance classification CRC	2
Medium temperature	-5 ... 50 °C
Ambient temperature	-5 ... 50 °C
Product weight	115 g
Electrical connection	2-pin
Mounting type	with through hole
Pilot exhaust port 82	M3
Pilot exhaust port 84	M3
Pilot air port 12	M3

Feature	values
Pilot air port 14	M3
Pneumatic connection, port 1	G1/8
Pneumatic connection, port 2	G1/8
Pneumatic connection, port 3	G1/8
Pneumatic connection, port 4	G1/8
Pneumatic connection, port 5	G1/8
Materials note	Conforms to RoHS
Materials information for seals	NBR
Materials information, housing	Aluminium die cast