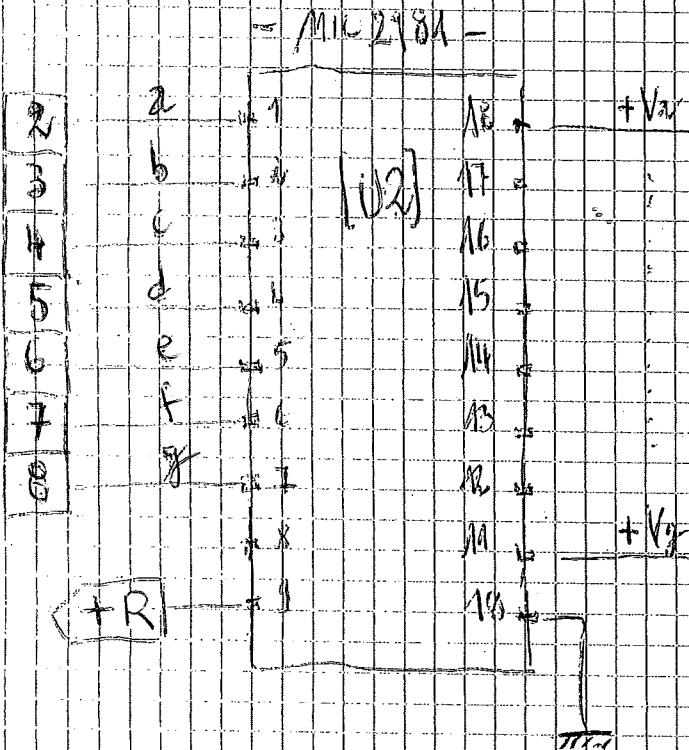
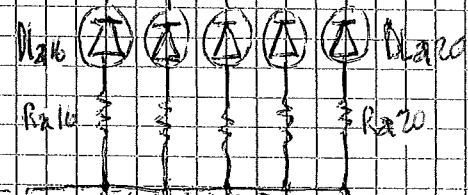
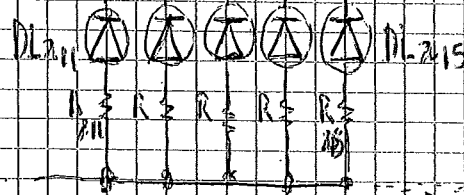
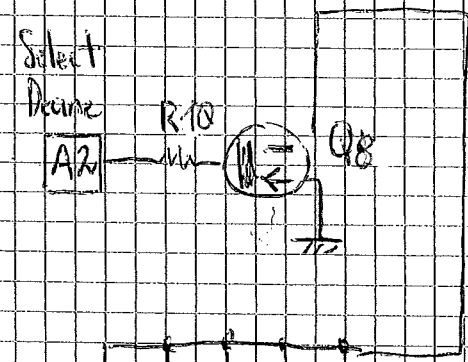
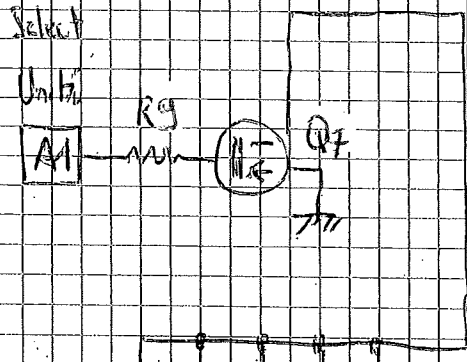
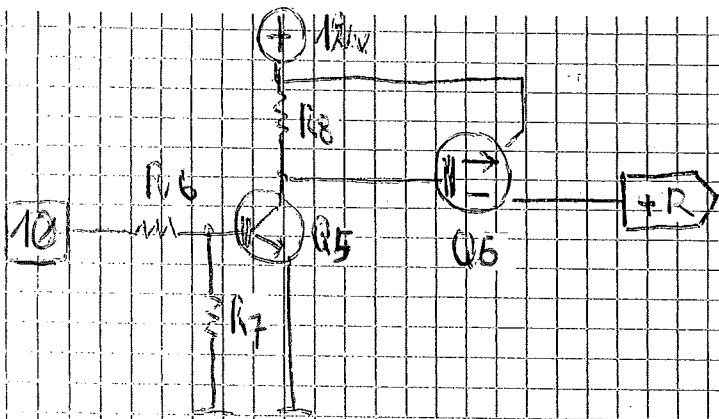


- R1 = 100 Ω
- R2 = 100 KΩ
- R3 = 10 KΩ
- R4 = 100 Ω
- R5 = 100 Ω
- R6 = 470 Ω
- R7 = 470 Ω
- R8 = 470 Ω
- R9 = 470 Ω
- R10 = 470 Ω
- Q1 = 2N2904
- Q2 = 11F 9520 P.
- Q3 = 11F 540 N.
- Q4 = "
- U1 = MIC2981

R21 - R70 = 470 Ω

Pin ATMEGA

Gestione Segmenti VERDE



- $R_6 = 100 \Omega$
- $R_7 = 100 \text{ K}\Omega$
- $R_8 = 10 \text{ K}\Omega$
- $R_9 = 100 \Omega$
- $R_{10} = 100 \Omega$
- $Q_5 = 2N2904$
- $Q_6 = 11F4580$
- $Q_7 = 11F540$
- $Q_8 =$
- $Q_2 = \text{MIC2784}$

$R_{11} = R_{12} = 470 \Omega$